

# *Measuring Tidal Wetland Response to Restoration Using Performance Benchmarks from Local Reference Sites*



*Michele Dionne and Christopher Peter*

*With contributions from Kenneth Raposa, Robin Weber, John Fear, Scott Lerberg, Craig Cornu, Heidi Harris, and Nina Garfield*

*National Estuarine Research Reserve System, May 2012*



## Table of Contents

Overview .....	1
Primary Findings.....	1
Project Results Summary and Recommendations.....	2
The Study.....	15
Background.....	15
Study Sites .....	15
Methods Summary .....	22
Project Discussion.....	24
Reference Cited .....	35
Appendix A: Methods Detail.....	38
Appendix B: Results Detail.....	45
Appendix C: Data Management.....	59

### Acknowledgements

Project participants would like to thank Melanie Gange and the staff at the NOAA Restoration Center, Sliver Spring, MD for providing the support and guidance that made this project possible.

Cover photos: Top- New England salt marsh, ME; Second row left- Duke Marine Lab marsh, NC; Second row right- Hermatage marsh breakwater, VA; Third row- South Slough salt marsh, OR; Bottom row- Nag marsh, RI.



# Overview

In this study we collected data from a series of relatively undisturbed tidal wetlands at or near five National Estuarine Research Reserves (Reserves) located in Maine, Rhode Island, Virginia, North Carolina and Oregon as reference sites against which to compare the restoration status of 17 local tidal wetland restoration projects previously funded by the Estuarine Restoration Act since 2000.

The objectives of this study, funded by the NOAA Restoration Center, are fourfold:

1. Determine the level of restoration achieved at each project restoration site;
2. Identify key biotic (vegetation) and abiotic (hydrology, soils, marsh elevation) indicators that best explain variation in restoration response;
3. Determine the utility of long-term wetland monitoring sites at Reserves as reference sites for restoration projects implemented within the region; and
4. Compare responses of hydrologic and excavation/fill types of restoration.

This report summarizes findings at all study sites for three years (2008-2010). Each Reserve has also provided a report to the Restoration Center with detailed site information, maps, analyses and conclusions specific to that region (Cornu et al. 2011, Dionne and Peter 2011, Fear 2011, Lerberg and Reay 2011, Raposa and Weber 2011).



## Primary Findings

*Through our data collection, analyses and interpretation, we offer the following conclusions:*

- *Reserve tidal wetland sites can provide appropriate long-term reference sites for local tidal wetland restoration projects.*
- *A recently formalized ecological index, the **Restoration Performance Index (RPI)** which compares change in user-selected indicator variables over time between reference and restoration sites (Moore et al. 2009) offers promise as an effective **trajectory analysis strategy** (SER 2004) for measuring restoration status.*
- *According to our RPI values, most restoration projects surveyed in this study appeared to have achieved an intermediate level of restoration with two sites appearing to have become very similar to their paired reference sites, suggesting a high level of restoration.*
- *Two abiotic variables – 1) elevation of marsh platform, and 2) depth to groundwater were significantly correlated with plant community structure, providing important indicators of tidal wetland restoration performance.*



## Project Results Summary and Recommendations

### *Level of restoration achieved by each restoration project and the utility of the Restoration Performance Index (RPI)*

Using the RPI as a tidal wetland restoration evaluation tool along with other data analyses, we were able to conclude the following about our study sites, and about the use of the RPI:

1. *Among the hydrologic parameters analyzed (pore water salinity, tidal inundation period, depth to groundwater, maximum high tide), there were few large differences between reference and restoration values, suggesting hydrologic equivalence with reference conditions at most sites. These results also suggest that key physical processes needed to support the continued recovery of plant communities at these sites are in place.*
2. *Of the vegetation parameters analyzed (percent cover of the five most common reference species, species richness), there were large differences between reference and restoration sites, which suggests that most sites are still in transition to full restoration.*

*Over three years, species richness appeared to be quite variable, frequently leading to noticeable annual change in the RPI vegetation component (from 2009 to 2010, in particular), often trending to lower species richness (fewer species).*

*This trend is likely explained more by our sampling design than by site changes: the small number of species present per square*

Parameters
<b>Biotic:</b>
Species, composition and percent cover of herbaceous vascular plants
Plant height
Stem Density
<b>Abiotic:</b>
Hydrological- water fluctuation over time
Salinity in tidal areas
Soil/sediment: organic content and bulk density
Soil/sediment: pore water salinity
Wetland surface elevation

Table 1. Biotic and abiotic parameters monitored for this study.

## Data Collection

We collected data describing a suite of specific biotic and abiotic parameters at all reference and restoration sites at the five Reserves involved in the project (Table 1). Monitored parameters were based on NOAA's reference manual for restoration monitoring (Thayer et al. 2005) and selected in consultation with the NOAA Restoration Center. Data collected from reference sites served as benchmark parameter values for the restoration sites.

meter, generally one to three species on the East Coast but ranging from zero to five, and from three to seven in Oregon, means that a small change in species number could lead to a large change in the vegetation RPI, given that this parameter was weighted as 25% of the total RPI score.

*It's likely that as more years of data are collected, it will become apparent that species numbers vary around a mean at most sites, rather than following an upward or downward trend. At sites where a trend is apparent, this parameter would be of real value.*

It should be noted that the utility of the RPI to measure the recovery status of tidal wetland restoration projects was constrained for most of our restoration study sites by the fact that no baseline data (neither pre-restoration nor immediate post-restoration) were available for our analyses. In many cases, the period of dynamic response to restoration had already passed by, and our data reflect change during a more dampened period of recovery. Despite these limitations, the RPI proved useful for providing concise numeric and graphical comparisons of parameters, indicating the extent of restoration relative to the reference sites.

We feel it would be useful to add percent cover of invasive species as a third parameter to the RPI vegetation component. Based on this study and other observations, invasive species can be an important threat to tidal wetland restoration sites and should be incorporated into the RPI. In addition, by adding invasive species to the vegetation component of the RPI, the influence of species richness values, mentioned above, will also be tempered.

## COASTAL REGIONS and RESTORATION TYPES

*In this study we focused on tidal wetland hydrologic and excavation/fill restoration sites and associated relatively undisturbed reference sites in the Acadian, Virginian, Carolinian, and Columbian biogeographic regions of the U.S. (NERRS 2009).*

*We define hydrologic restoration as activity that results in the reintroduction of tidal flooding to a non-tidal or minimally tidally flooded site; and excavation/fill restoration as activity that results in the expansion or reconfiguration of a tidal marsh surface at an already tidally influenced site.*

It may be useful to add a fourth parameter to the RPI vegetation component: species richness of the five most abundant reference site species. This parameter could provide useful insights to the restoration process. Additional work will be needed to assess the utility of this addition to the RPI.

When interpreting RPI results, it should be noted that plant communities during the initial phases of emergent wetland restoration are often distinctly different from their more stable and mature reference sites.

Restoration site plant communities develop from colonization (or planting) after a sometimes large and near-complete disturbance. Reference sites, on the other hand, remain rela-

tively undisturbed and can maintain their “late successional” plant community structure while incorporating altered community patches maintained by small scale, episodic disturbances due to drivers (such as ice cover, wrack, waterlogged soils, etc.), related to variation in soil drainage. Because of these early site recovery dynamics (that may not be well understood by all restoration practitioners), RPI restoration site values may linger in the lower ranges for some time after restoration plan implementation.

Interpretation of the RPI scores without the benefit of a solid understanding of restoration processes has the potential to lead to the implementation of unnecessary or premature adaptive management actions on the part of less experienced restoration practitioners and land owners.

### Recommendations

- *Formal outside review of the implementation of the RPI described in this study should be conducted to provide important perspectives on this approach to restoration monitoring.*

## RESTORATION PERFORMANCE INDEX: RPI

*We calculated the Restoration Performance Index using structural and functional variables for which we had more than one year’s data. The RPI provides a quantitative measure of change in the restoration site, relative to the reference site or reference benchmarks over time. The index is the weighted sum of RPI scores measured for each selected variable over the specified time interval, and can be used to describe restoration trajectories.*

*The RPI score for a given variable is defined as:*

$$\frac{(Restoration\ present\ state\ (tx)) - (Initial\ restoration\ state\ (t0))}{(Reference\ present\ state\ (tx)) - (Initial\ restoration\ state\ (t0))} = RPI$$

*Pore water salinity example:*

$$\frac{(Salinity\ @\ tx\ restoration) - (Salinity\ @\ t0\ restoration)}{(Salinity\ @\ tx\ reference) - (Salinity\ @\ t0\ restoration)} = RPI\ Pore\ water\ Salinity$$

$$or\ (23psu - 11psu) / (35psu - 11psu) = 0.5$$



- *The version of the RPI developed for this study should be revised by adding percent cover of invasive species as a third subcomponent of the Vegetation Component score.*
- *Restoration monitoring should occur until observations indicate that the original (or adaptively modified) restoration goal has been reached. In addition, the RPI developed for this study (and revised as above) should be applied to project sites as early as possible (prior to restoration, then every year for the first three years of restoration, and every 2 to 5 years thereafter) until the original (or adaptively modified) restoration goal has been reached.*
- *The NERR System should develop a detailed training document and training workshops in the use of the RPI for performance evaluation of tidal wetland restoration projects, from sampling design, to data collection methods, to data organization, analysis and interpretation.*
- *The Restoration Center should encourage their grantees to consult with restoration monitoring professionals at local NERR sites for assistance in choosing restoration monitoring protocols relevant to the region.*
- *Since, for a wide variety of reasons, the potential level of restoration possible at many disturbed tidal wetland sites can be less than 100% over the near-term (e.g., 20 years) and possibly longer, we encourage a realistic assessment of the level of restoration possible at sites be conducted during project design. The assessment should be wide ranging, taking into account any factors that would likely prevent or slow full site recovery (e.g., marsh surface subsidence, climate-related impacts, or financial, practical,*

*or social constraints placed on restoration design or subsequent project implementation, monitoring and adaptive management... etc.).*

***Key Vegetation, Hydrologic, Soil and Elevation Indicators that Best Explain Variation in Restoration Response***

**Emergent Vegetation Species Percent Cover**

For the purposes of evaluating restoration of plant communities, using similarity of percent cover between restoration and reference sites as the primary plant community metric worked well in our study. We also agreed that the use of the point – intercept method for estimating plant species and other types of cover would provide the most accurate observations. Monitoring personnel including consultants, agency staff, volunteers...etc., can vary from site to site and year to year. Using the point-intercept method requires less personal judgment for data collection compared to visual percent cover estimation methods.

The use of percent cover of the five most abundant reference site species provided RPI scores that agreed with ANOSIM (analysis of similarity) and SIMPER (similarity percentages) results, in that they both indicated that plant communities were only partly restored at the majority of restoration sites. Given that there were up to 21 species contributing to the cumulative 90% cover in each reference-restoration site pair, this greatly simplified calculating the RPI total score, and focused attention on the species that provide evenness or stability (in the context of the marsh plant community, stability means the opposite of variability).

It's important to note that because of local and regional variability associated with tidal wetland habitats (e.g., site size, plant community diversity, landscape setting), emergent vegetation sampling design needs to be responsive to local site attributes.

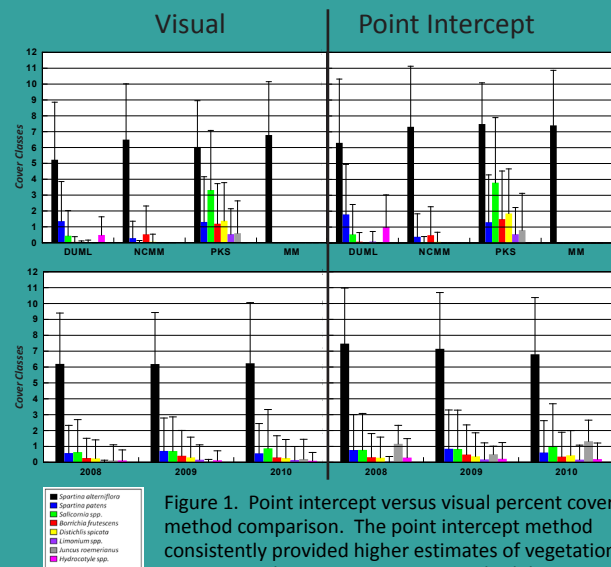
For example, west coast salt marsh plant communities tend to be more diverse than those on the east coast and plant zonation tends to be more limited in scale due to the generally smaller wetland area. Sampling design power analyses conducted by the South Slough NERR science staff in Oregon determined that

in order to characterize change in percent cover year to year, the number of salt marsh plots sampled needed to be greater than the 20 replicate plots per marsh area recommended in the vegetation sampling protocol used in this study (Roman et al. 2001). In addition, transects oriented perpendicular to plant zones per Roman et al. (2001) in west coast emergent wetlands do not allow enough plots to be placed in each intertidal plant zone to adequately characterize each plant community in its zone. Vegetation sampling plots in west coast salt marshes should be oriented per Roegner et al. (2008).

## NORTH CAROLINA NERR: POINT-INTERCEPT VERSUS VISUAL PERCENT COVER METHOD

We conducted our vegetation surveys using both the point intercept method as described in Roman et al. (2001), and the visual percent cover method as described in Pete et al. (1998). The point intercept method was more labor intensive than the visual observation method, but was judged by our field crew to be less subjective. The point intercept method had a tendency to miss small individuals of rare species. For example, many times a lone *Limonium* plant was present in the sampling quadrat and was detected with the visual method, but was not touched by one of the point intercepts and so would not have been counted with this method alone. The visual assessment method consistently provided a lower estimate for the percent cover compared to that derived from the point intercept data. (see Figure 1). Despite the difference in magnitude, the overall trends for the data in Figure 1 are essentially mirror images. At our site where a core group of field investigators are always

present during vegetation data collection, we would have reached the same conclusions regarding our marsh comparisons if we had used the visual percent cover method instead of the point intercept method.





## Recommendations

- Emergent vegetation species percent cover should be used as the primary plant community metric in evaluating the similarity between restoration and reference site plant communities.
- The point-intercept method (Godinez-Alvarez et al. 2009) should be considered for collection of plant species presence and relative abundance in all layers within one-square-meter quadrats, in particular if different field investigators are estimating percent cover year to year, or site to site (see sidebar).
- *Picturepost* (<http://picturepost.unh.edu/>) should be used to collect standardized photo points of reference and restoration sites. Photos should be taken the first week of every third month (March, June, September, December), at least once prior to restoration, then every year for the first three years of restoration, and every two to five years thereafter). (We did not use picture-post photo points in the current study, but consider this an important technique for documenting visible change at reference and restoration sites.)
- The RPI vegetation component score should use the five most abundant reference site species for the percent cover subcomponent score.
- NOAA Restoration Center restoration grant recipients on the west coast should consult with the Reserve site in their region or other knowledgeable agency or consulting sources about appropriate tidal wetland vegetation sampling design. See also Roegner et al. (2008).

Table 2. Recommended use of indicator variables for evaluating tidal wetland restoration performance. All monitoring should include at least one year of pre-restoration data collection.

TIDAL WETLAND PERFORMANCE INDICATOR VARIABLES															
	ABIOTIC									BIOTIC					
	Hydrology				Soils		Elevation			Vegetation					
	Salinity	Inundation	Groundwater	Max High Tide	Bulk Density	% Organic Matter	Sample Points/Plots	Transect Profiles	Transect Transitions	% 5 Dominant Species-Ref	% Invasives	Species Richness	Native Stem Density	Invasive Stem Density & Height	Native Stem Height
Core (X)	X	X	X	X	X		X	X	X	X	X	X		X	
Option (x)						X							X		X
Sampling Scheme	1	2 or 3	2 or 3	1	4	4	1	4	4	1	1	1	1	1	1
Post-restoration sampling scheme codes:															
1. Data collected annually during growing season for the first three years following restoration, then every two to five years, until the restoration goal achieved. The goal can be changed over time through adaptive management.															
2. Data collected monthly, following yearly sampling as in Sampling Scheme 1.															
3. Data is collected on four dates, following yearly sampling as in Sampling Scheme 1 (option is an alternative to Sampling Scheme 2).															
4. Data is collected at intervals of one, two and five years following restoration, then every five years until restoration goal is achieved. Goal can be changed over time through adaptive management.															

### Emergent Vegetation Species Stem Height and Density

Estimating stem density and height for dominant and subdominant reference species can be a very time consuming process. However, these data can be very helpful for understanding site variation that affects plant growth, such as competition for nutrients and light, and response to stressors such as soil salinity and soil oxygen availability.

For our study these estimates proved to be quite variable across sites at most Reserves, with many significant differences among restoration sites, and between pairs of reference and

restoration sites. Stem height and density patterns did not agree with RPI results or ANOSIM and SIMPER results.

Plant species density and height can be monitored to test specific hypotheses about plant ecology under varying site conditions, or to precisely follow changes in the abundance of planted species. Stem height and density for dominant species can be measured, but for the most part, we do not consider these to be core variables to consider for restoration evaluation.

The one exception is that invasive species plant density and stem heights should be recorded if possible.

## CHESAPEAKE BAY VA NERR: IMPORTANCE OF ACCURATE ELEVATION DATA

*Our study demonstrated the need to have very precise elevation data due to the very shallow grades in these restoration settings. Accurate elevation data was critical for interpreting the inundation data from the groundwater wells as well as some of the vegetation patterns. The elevation data was also very useful in understanding some of the “nuances” of the reference and restoration sites (for example, some localized depressional areas adjacent to the upland area of both Cheatham Annex and Taskinas Creek). With access to multiple types of equipment for measuring marsh elevations in our study, we collected elevation information each year using a combination of approaches (standard visual leveling, digital bar code leveling, and real time kinematic (RTK) GPS). While there was some variation in the data collected using the different approaches, all three methods produced reliable results.*

*Our approach is to determine the level of accuracy needed to answer your research questions, and then assess the costs (i.e. training, field time, processing time), versus the benefits (in terms of accuracies) of the different options. We suggest installing a network of local benchmarks for any long-term restoration monitoring, along with a maintenance schedule on which to repeat elevation surveys (for long-term restoration monitoring).*



Invasive species in some regions of the U.S. (e.g., *Phragmites australis* in the Northeast) can be large and therefore less dense, and occur in fewer plots, hence they can be relatively easy to count and measure. Change in density and/or plant height may occur earlier than a change in percent cover for some invasive species. These data may serve as an early indicator to guide management actions designed to reduce or eliminate their threat.

### Recommendations

- *Stem height and stem density measurements should be required only for invasive species. Invasive species stem height and density should be measured annually during seasonal peak above-ground biomass, beginning the year prior to restoration, for three years following restoration, and then every two to five years thereafter.*
- *Stem height and stem density measurements should remain an option for testing specific hypotheses that directly address or shed light on specific restoration goals. The same general field sampling methods would apply as described above.*

### Groundwater and Surface Water Levels

These data were collected with the extensive use of continuously recording water level loggers (pressure sensors) that provide robust data sets for measuring tidal wetland inundation patterns. Some project participants chose to use In Situ Aquatroll 200™ loggers, which measure water level, salinity and temperature, in combination with manual spot measurements. At other sites a combination of In Situ Aquatroll 200™ loggers, Onset HOBO™ water level loggers, and Solinst Leveloggers which measure water level and temperature only, were used. Because of varying financial constraints, some sites were not able

to purchase enough loggers to measure groundwater and surface water levels simultaneously at both the restoration and reference sites. Most were not able to collect continuous water level and salinity data at every vegetation plot.

To carry out environmental parameter-plant community correlations we used the groundwater levels measured periodically by hand, as they were mostly associated with individual vegetation plots. A financially practical way to obtain continuous water level data would be to encourage the use of relatively inexpensive (\$595) Onset HOBO™ water level loggers (vs. \$2500 for Aquatroll™ loggers) placed at the bottom of each shallow PVC well at each vegetation plot or some subset of these plots. Given the small volume of water contained in shallow wells, the effects of water temperature and salinity on water level are likely to be too small to be of concern. This could be verified by including an Onset HOBO™ temperature / conductivity / salinity logger (\$750) at several locations within the study marsh, adjacent to a water level logger.

Barometric pressure can be measured (for water level correction) by placing one water level logger anywhere above the high water level at the site. Single Aquatrolls™ (or combination of the two HOBO™ loggers described above) could be deployed in the main channel adjacent to both the reference and restoration marshes to provide water level, temperature and salinity of the estuarine source water.

### Recommendations

- *Many continuously recording mini-loggers should be used in shallow, small volume wells associated with a representative set of vegetation plots to record patterns of inundation, rather than using fewer, more expensive loggers, deployed in deep*





*groundwater monitoring wells. Loggers would not necessarily be deployed at every plot, but the more the better. Loggers should be deployed simultaneously at reference and restoration sites for a minimum of one growing season lunar cycle annually, beginning one year prior to restoration, with a maximum 30-minute time interval between readings.*

*low tide, as close together in time as possible (same day or next day, or same week providing weather has been stable) for reference and restoration sites.*

### **Pore Water/Groundwater Salinity**

Soil salinity is a primary determinant of plant species communities in tidal emergent marshes, and is a subcomponent of the RPI hydrology component. Soil salinity was not a primary correlate of plant community assemblages within sites, possibly because there was rather low variation in this parameter within sites.

In this study, soil salinity was measured from water samples taken from shallow groundwater wells, with Aquatralls from deep groundwater wells, and with sippers probed into the root zone (10-25 cm or deeper if needed), and from water squeezed from replicate soil samples taken from the top 15 cm of the emergent marsh root zone using a garlic press and coffee filter.

Soil salinity measurement can be simplified by measuring salinity from water samples collected from the shallow groundwater wells. These data can also be used to determine whether there is a significant effect of salinity on water levels measured by water level loggers deployed in shallow wells. That there is likely little difference between salinity measured in shallow groundwater wells or by sippers can be verified with data collected by the Wells NERR for this study (Dionne and Peter 2011).

### **Recommendations**

- *Soil salinity measurement should be collected from shallow groundwater wells placed adjacent to every vegetation monitoring plot, or a representative set of plots. Data should be collected a minimum of four times annu-*



Placing a water quality and depth data sonde for the NERRS System-Wide Monitoring Program (SWMP) in North Carolina. SWMP data can be used to augment tidal wetland reference site data at NERR sites.

*Additional deployments should capture water levels during seasonal transition periods.*

*If collecting continuous water level data using loggers is not possible, we suggest collecting depth to groundwater measurements by hand from shallow groundwater wells placed adjacent to every vegetation monitoring plot (or a representative set of plots). Data should be collected a minimum of four times annually (beginning one year prior to restoration) during each growing season. Data collection should occur at mid to*

ally (beginning one year prior to restoration) during the growing season. Data collection should occur at mid to low tide, as close together in time as possible (same day or next day, or same week providing weather has been stable) for reference and restoration sites. At least two collection dates should coincide with the deployment period of continuously recording loggers (when used) within the wells, preferably the start and end dates.

### **Soil Structure (Bulk Density and Percent Organic Content)**

Under stable natural conditions, soil parameters change more gradually than do hydrologic and vegetation parameters.

Bulk density and percent organic content were correlated with the plant community assemblage at only one Reserve (Wells ME), where these parameters were measured adjacent to every vegetation plot. These parameters can be quite different between restoration and reference sites prior to hydrologic restoration, due to soil oxidation, or water logging and subsidence. For excavation/fill restoration, the soils that are exposed or that are brought to the site for project construction will often be quite different from those of the natural reference system. For both excavation/fill and hydrologic restoration types, soils may change noticeably during early restoration due to sediment deposition or erosion. Once the site hydrology has been established, surface soils will change more gradually, but may undergo rapid alteration due to storm events.

Root zone soil measurements allow us to follow incremental recovery of both mineral content and below ground plant biomass. Bulk density and percent organic content of the soils tend to be related (higher bulk

density soils have higher mineral content and lower organic content), so both parameters may not need to be measured if the equipment for combusting soil carbon (to assess percent organic carbon) is not available, or sending soil samples to a soils lab is not feasible.

Soil pore water oxidation-reduction (redox) potential provides a measure of the ability of a soil to provide electron acceptors for the oxidation process, characterizing hydrologic conditions, microbial activity, plant root processes, and mineral, organic and nutrient content of tidal marsh soils (Davy et al. 2011). It can be measured quickly (as mV) in a root zone pore water sample extracted with a sipper using a hand-held mv/pH field probe. We did not collect redox data for this study.

### **Recommendations**

- *Soil bulk density and percent organic content should be measured at every vegetation plot (or as many as needed to adequately represent the plant community), beginning one year prior to restoration, and repeated at intervals of one, two, five and 10 years after restoration work is completed. If measurement of percent organic content presents a logistical or financial challenge, it can be omitted.*
- *Soil redox (not measured in this study) should be measured annually at every vegetation plot at least once per year, beginning one year prior to restoration, at mid to low tide, during the period of peak vegetation biomass (coinciding with salinity and depth to groundwater measurements). Data should be collected as close together in time as possible (same day or next day, or same week providing weather has been stable) for reference and resto-*



Collecting elevation data in North Carolina tidal flats using survey grade Real-Time Kinematic GPS instruments.

ration sites. If more sampling periods are possible, they should also coincide with salinity and depth to groundwater measurements.

### **Wetland Surface Elevation Profiles**

Wetland surface elevation is a critical factor determining wetland plant community assemblages. In our study, vegetation plot elevations were a primary correlate of plant



Figure 2. *Carex Lyngbyei* monoculture at 14 year old tidal wetland restoration site in Oregon.

species assemblages. Elevation was also a critical factor determining tidal wetland plant community structure and function. Since elevation and tidal hydrology determine the pattern, frequency and duration of marsh inundation, elevation should be monitored for change over time.

Increases in marsh elevation indicate the ability of the marsh to sustain itself in response to increased inundation, either from restoration or from sea level rise. Decreases in marsh elevation signal subsidence or erosion, and indicate the loss of ability of the marsh to sustain itself in response to increased inundation. Profiles of monitoring transects showing the elevation and location of zonal transitions, channels, pools and other surface features of note provide an excellent coarse-scale qualitative and quantitative summary of marsh ecogeomorphology that can be compared easily in time series.

Rod-surface elevation tables (RSETs) provide an excellent fine-scale quantitative summary of year-to-year or season-to-season change in marsh surface elevation. Feldspar soil horizon markers provide a critical understanding of the relative contribution of vertical accretion (mineral and organic matter accumulation on the marsh surface) to marsh surface elevation change at sites. Our ability to interpret our data would have been further enhanced by having information acquired from a modest network of rod-surface elevation tables (RSETs) and feldspar soil horizon markers established at the site pairs.

### **Recommendations**

- *Elevations of vegetation plots and groundwater wells should be measured annually, beginning at least one year prior to restoration. Elevations should be tied to the North American Vertical Datum 1988 (NAVD88).*
- *Elevation data should be collected along vegetation monitoring transects beginning at least one year prior to restoration and repeated during the first, second and fifth years, and every five years thereafter. Elevation profiles should be created showing all marsh zones, vegetation plots and transitions, from the elevation data. Elevations should be tied to NAVD88 or a local tidal datum.*
- *Marsh surface elevations and vertical accretion using RSETs and feldspar soil horizon markers at restoration and reference sites should be measured annually (or seasonally, if possible), beginning at least one year prior to restoration.*



- The NERR System should develop training workshops focused on the measurement of marsh surface elevation changes and vertical accretion using survey-grade GPS RTK survey instruments, RSETs and feldspar horizon marker techniques to facilitate the evaluation of tidal wetland restoration projects.

**Utility of long-term wetland monitoring sites at Reserves as reference sites for restoration sites within the region**

The use of reference sites, especially those permanently protected within NERRS boundaries, provided, for the most part, appropriate benchmarks to evaluate the local restoration sites included in this study. Two reference

**SOUTH SLOUGH NERR OR:  
MONOTYPIC DOMINANCE BY ROBUST  
NATIVE SEDGE**

Percent cover data collected and analyzed for this three year project shows the dominance of the common native sedge, *Carex Lyngbyei* persisting at the Kunz Marsh restoration site and the greater species diversity at the Danger Point Marsh reference site (e.g., Figure 3). Many mid- to high marsh tidal wetland restoration projects in Oregon develop plant communities overwhelmingly dominated by *C. lyngbyei* (Figure 2). Some have persisted for as long as 30 years (and counting). The low diversity of these recovering emergent wetlands may be cause for concern but it helps to know that some naturally-occurring marsh habitats can also be dominated by this robust plant. And 30 years is insignificant compared with the time tidal marshes may need to develop diverse and complex biological and physical attributes. It may be that disturbance events at varying scales over the long term will push Kunz Marsh vegetation cover inevitably towards a more diverse plant community.

But since one of the most often cited justifications for habitat restoration is the re-establishment of physical and biological complexity, we wonder if the “*Carex*-dominance” issue in the Pacific Northwest should be investigated to determine whether tidal wetland restoration practices for projects that would normally rely on natural recruitment should include measures to accelerate the development of more diverse plant communities.

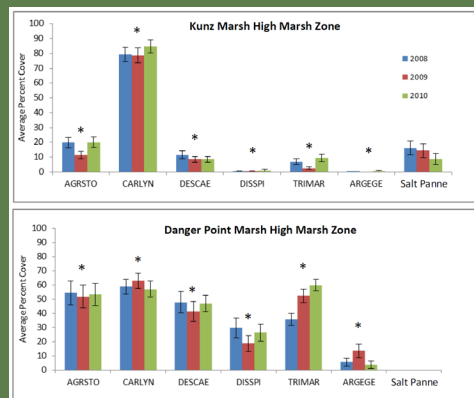


Figure 3. Percent cover means in the Kunz and Danger Point high marsh zone for each of the dominant emergent marsh species or species or element of interest at both sites. Asterisk denotes significant difference between sites for individual species. Species code for *C. Lyngbyei* is CARLYN.

sites outside of NERRS boundaries, permanently protected by national or local conservation groups, were also used in our analyses: 1) the Yaquina-28 (Y-28) site in the Yaquina estuary in Oregon was paired with the Yaquina-27 (Y-27) restoration site nearby (both sites are about 145 km from South Slough NERR), and 2) the Jacobs Point restoration site in Rhode Island used an adjacent reference site within the same estuary.

Since many of the NERRS reference sites in this study are part of system wide, long-term, monitoring programs that include emergent vegetation monitoring (e.g., NERRS Sentinel Sites), time series reference condition data for use in restoration project design and evaluation will continue to be available over the long term.

## Recommendations

- *The NOAA Restoration Center and others involved with tidal wetland restoration around the nation should consider the NERRS in their regions as sources of high quality reference condition data and expertise in restoration monitoring and evaluation.*
- *The NOAA Restoration Center and the NERRS Sentinel Site Work Group should collaborate to ensure that the variables selected for evaluating emergent wetland restoration for projects funded by the Restoration Center be included in the NERRS long-term emergent vegetation monitoring program. This will provide a usable, long-term, reference site data base for the Restoration Center.*

